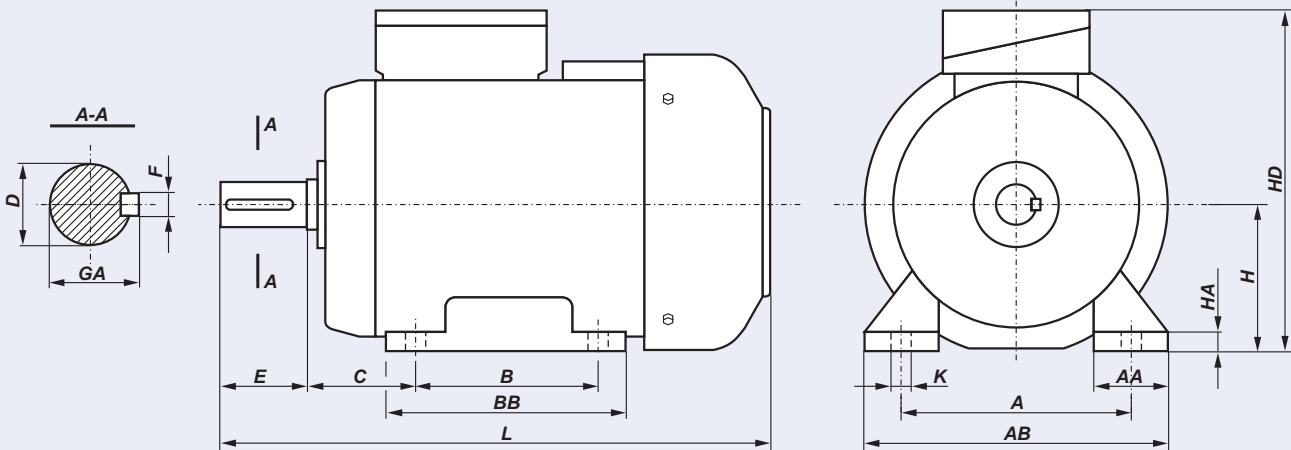


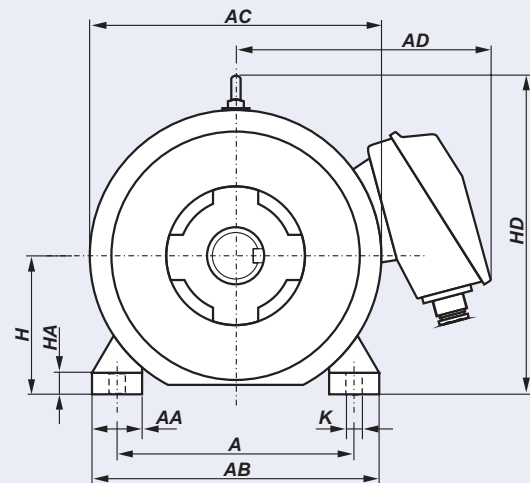
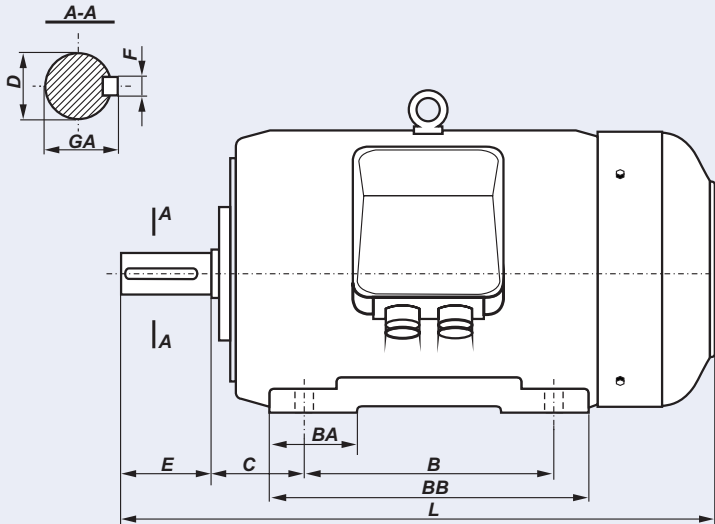
SILNIKI NA ŁAPACH - IM B3



WYMIARY MONTAŻOWE I GABARYTOWE

Typ silnika	A	B	C	D	E	F	GA	H	HA	K	AA	AB	BB	HD	L
Sh 71-A	112	90	45	14j6	30	5h9	16,0	71	8	7	45	142	116	182	223
Sh 71-B	112	90	45	14j6	30	5h9	16,0	71	8	7	45	142	116	182	245
Sh 80-A	125	100	50	19j6	40	6h9	21,5	80	9	10	55	160	130	195	266
Sh 80-B	125	100	50	19j6	40	6h9	21,5	80	9	10	55	160	130	195	278
Sh 90S ...	140	100	56	24j6	50	8h9	27,0	90	10	10	50	170	153	220	305
Sh 90L ...	140	125	56	24j6	50	8h9	27,0	90	10	10	50	170	153	220	330
Sg 100L ...	160	140	63	28j6	60	8h9	31,0	100	14	12	45	200	172	240	376
Sg 112M ...	190	140	70	28j6	60	8h9	31,0	112	14	12	54	230	174	276	384
Sg 132S ...	216	140	89	38k6	80	10h9	41,0	132	16	12	56	278	182	310	463
Sg 132S-2B	216	140	89	38k6	80	10h9	41,0	132	16	12	56	278	220	310	501
Sg 132M ...	216	178	89	38k6	80	10h9	41,0	132	16	12	56	278	220	310	501
Sg 160M ...	254	210	108	42k6	110	12h9	45,0	160	20	15	60	305	256	370	612
Sg 160L ...	254	254	108	42k6	110	12h9	45,0	160	20	15	60	305	300	370	656
Sg 180M ...	279	241	121	48k6	110	14h9	51,5	180	26	15	70	350	320	408	705
Sg 180L ...	279	279	121	48k6	110	14h9	51,5	180	26	15	70	350	320	408	705

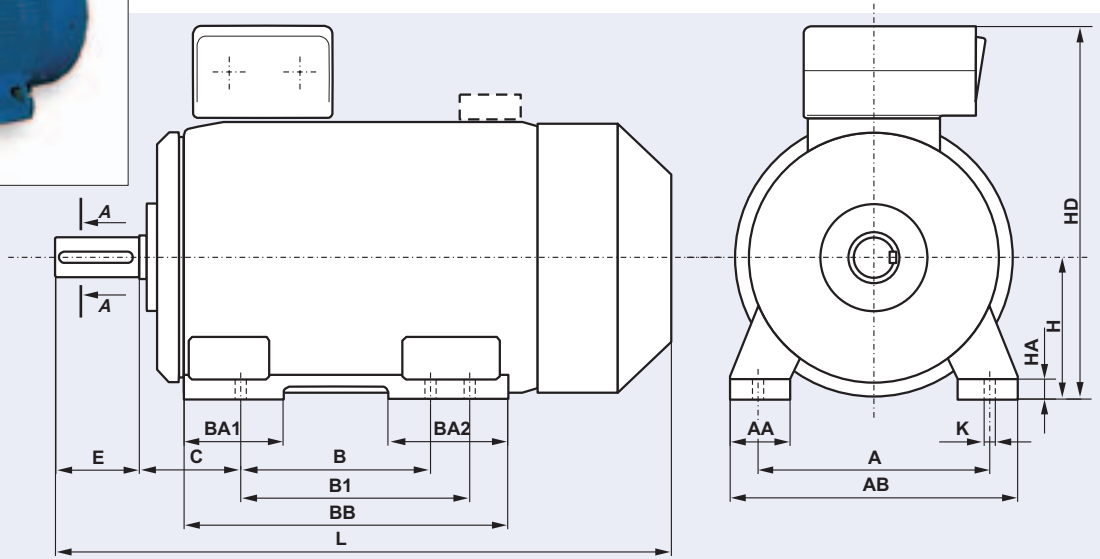
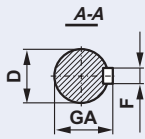
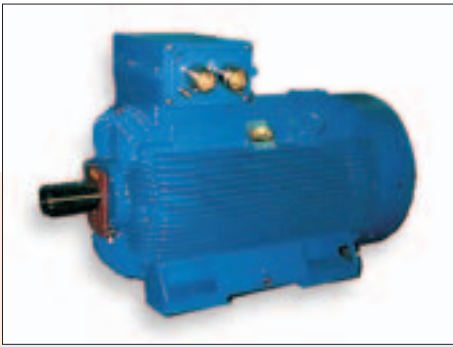
SILNIKI NA ŁAPACH - IM B3



Typ silnika	A	B	C	D	E	F	GA	H	HA	K	AA	AB	AC	AD	BA	BB	HD	L
Sg 200 L...	318	305	133	55m6	110	16h9	59,0	200	32	19	80	400	450	355	100	380	485	810
Sg 225 S...	356	286	149	60m6	140	18h9	64,0	225	34	19	85	445	505	375	110	355	535	860
Sg 225 M2..	356	311	149	55m6	110	16h9	59,0	225	34	19	85	445	505	375	110	380	535	855
Sg 225 M...	356	311	149	60m6	140	18h9	64,0	225	34	19	85	445	505	375	110	380	535	885
Sg 250 M2..	406	349	168	60m6	140	18h9	64,0	250	36	24	90	495	540	415	120	420	590	980
Sg 250 M...	406	349	168	65m6	140	18h9	69,0	250	36	24	90	495	540	415	120	420	590	980
Sg 280 S2..	457	368	190	65m6	140	18h9	69,0	280	40	24	100	560	620	450	165	520	660	1040
Sg 280 S...	457	368	190	75m6	140	20h9	79,5	280	40	24	100	560	620	450	165	520	660	1040
Sg 280 M2..	457	419	190	65m6	140	18h9	69,0	280	40	24	100	560	620	450	165	520	660	1040
Sg 280 M...	457	419	190	75m6	140	20h9	79,5	280	40	24	100	560	620	450	165	520	660	1040
Sg 315 S2..	508	406	216	65m6	140	18h9	69,0	315	46	28	105	610	620	450	190	560	695	1180
Sg 315 S...	508	406	216	80m6	170	22h9	85,0	315	46	28	105	610	620	450	190	560	695	1210
Sg 315 M2..	508	457	216	65m6	140	18h9	69,0	315	46	28	105	610	620	450	190	560	695	1180
Sg 315 M...	508	457	216	80m6	170	22h9	85,0	315	46	28	105	610	620	450	190	560	695	1210
Sg 315 MC.	508	457	216	80m6	170	22h9	85,5	315	45	28	130	640	694	585	150	550	750	1240
Sg 355 S2..	610	500	254	80m6	170	22h9	85,0	355	50	28	158	720	764	620	170	600	848	1354
Sg 355 S...	610	500	254	100m6	210	28h9	106,0	355	50	28	158	720	764	620	170	600	848	1394
Sg 355 M....	610	560	254	100m6	210	28h9	106,0	355	50	28	158	720	764	620	205	730	848	1454

WYMIARY MONTAŻOWE I GABARYTOWE

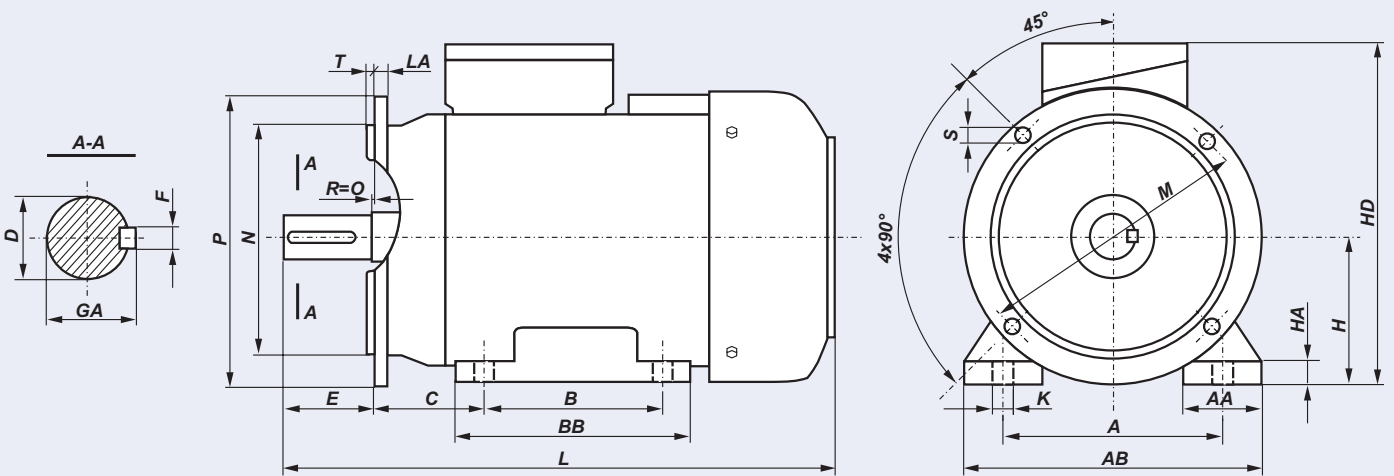
SILNIKI NA ŁAPACH - IM B3



Typ silnika	bieguny	A	B	B1	C	D	E	F	GA	H	HA	K	AA	AB	BA1	BA2	BB	HD	L
SEE 355	2	610	560	630	254	80	170	22	85	355	50	28	150	720	250	300	890	935	1580
SEE 355	4÷8	610	560	630	254	100	210	28	106	355	50	28	150	720	250	300	890	935	1620
Sh 355...s	2	610	900	---	200	70	140	20	75	355	45	28	160	730	265	265	1045	995	1800
Sh 355...s	4÷8	610	900	---	200	100	210	28	106	355	45	28	160	730	265	265	1045	995	1870

WYMIARY MONTAŻOWE I GABARYTOWE

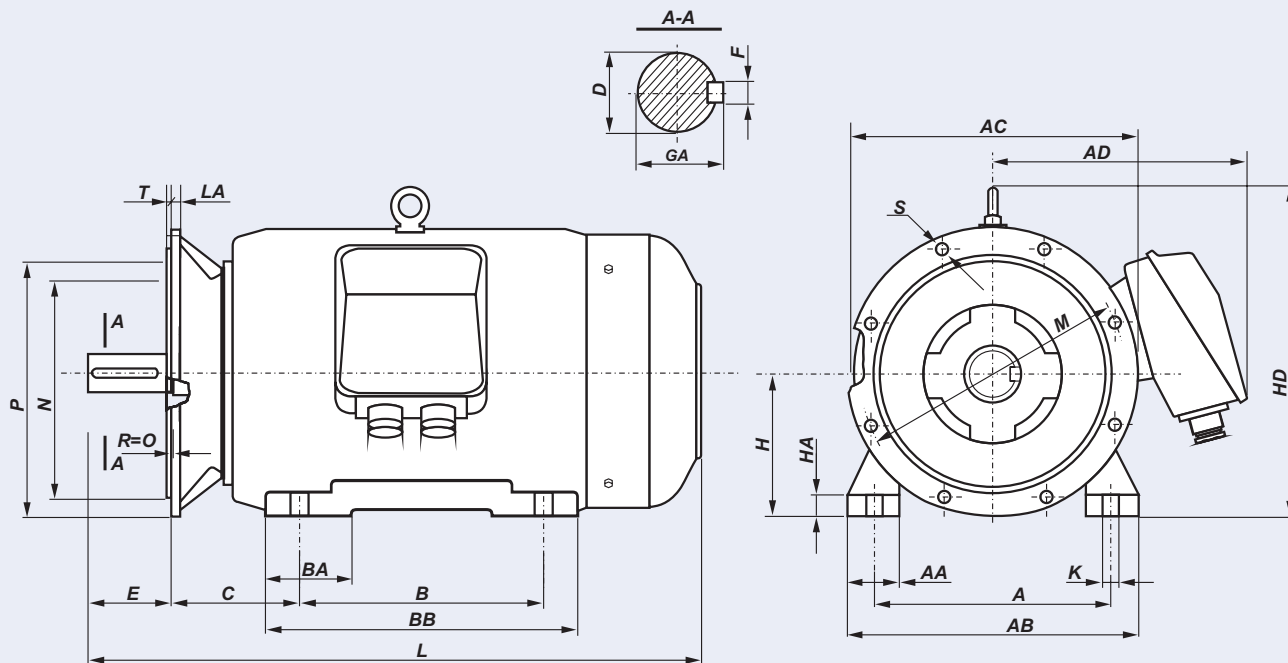
SILNIKI KOŁNIERZOWE NA ŁAPACH - IM B35



Typ silnika	A	B	C	D	E	F	GA	H	HA	K	AA	AB	BB	HD	L	LA	M	N	P	T	S
SLh 71- .A	112	90	45	14j6	30	5h9	16,0	71	8,0	10,0	45	142	116	182	223	9	130	110j6	160	3,5	10
SLh 71- .B	112	90	45	14j6	30	5h9	16,0	71	8,0	10,0	45	142	116	182	245	9	130	110j6	160	3,5	10
SLh 80- .A	125	100	50	19j6	40	6h9	21,5	80	9,0	10,0	55	160	130	195	266	10	165	130j6	200	3,5	12
SLh 80- .B	125	100	50	19j6	40	6h9	21,5	80	9,0	10,0	55	160	130	195	278	10	165	130j6	200	3,5	12
SLh 90S ...	140	100	56	24j6	50	8h9	27,0	90	10,0	10,0	50	170	153	220	305	8	165	130j6	200	3,5	12
SLh 90L ...	140	125	56	24j6	50	8h9	27,0	90	10,0	10,0	50	170	153	220	330	8	165	130j6	200	3,5	12
SLg 100L ...	160	140	63	28j6	60	8h9	31,0	100	14,0	12,0	45	200	172	240	376	11	215	180j6	250	4,0	15
SLg 112M ...	190	140	70	28j6	60	8h9	31,0	112	14,0	12,0	54	230	174	276	384	12	215	180j6	250	4,0	15
SLg 132S ...	216	140	89	38k6	80	10h9	41,0	132	16,0	12,0	56	278	182	310	463	12	265	230j6	300	4,0	15
SLg 132S-2B	216	140	89	38k6	80	10h9	41,0	132	16,0	12,0	56	278	220	310	501	12	265	230j6	300	4,0	15
SLg 132M ...	216	178	89	38k6	80	10h9	41,0	132	16,0	12,0	56	278	220	310	501	12	265	230j6	300	4,0	15
SLg 160M ...	254	210	108	42k6	110	12h9	45,0	160	20,0	15,0	60	305	256	370	612	13	300	250j6	350	5,0	19
SLg 160L ...	254	254	108	42k6	110	12h9	45,0	160	20,0	15,0	60	305	300	370	656	13	300	250j6	350	5,0	19
SLg 180M ...	279	241	121	48k6	110	14h9	51,5	180	26,0	15,0	70	350	320	408	705	13	300	250j6	350	5,0	19
SLg 180L ...	279	279	121	48k6	110	14h9	51,5	180	26,0	15,0	70	350	320	408	705	13	300	250j6	350	5,0	19

WYMIARY MONTAŻOWE I GABARYTOWE

SILNIKI KOŁNIERZOWE NA ŁAPACH - IM B35

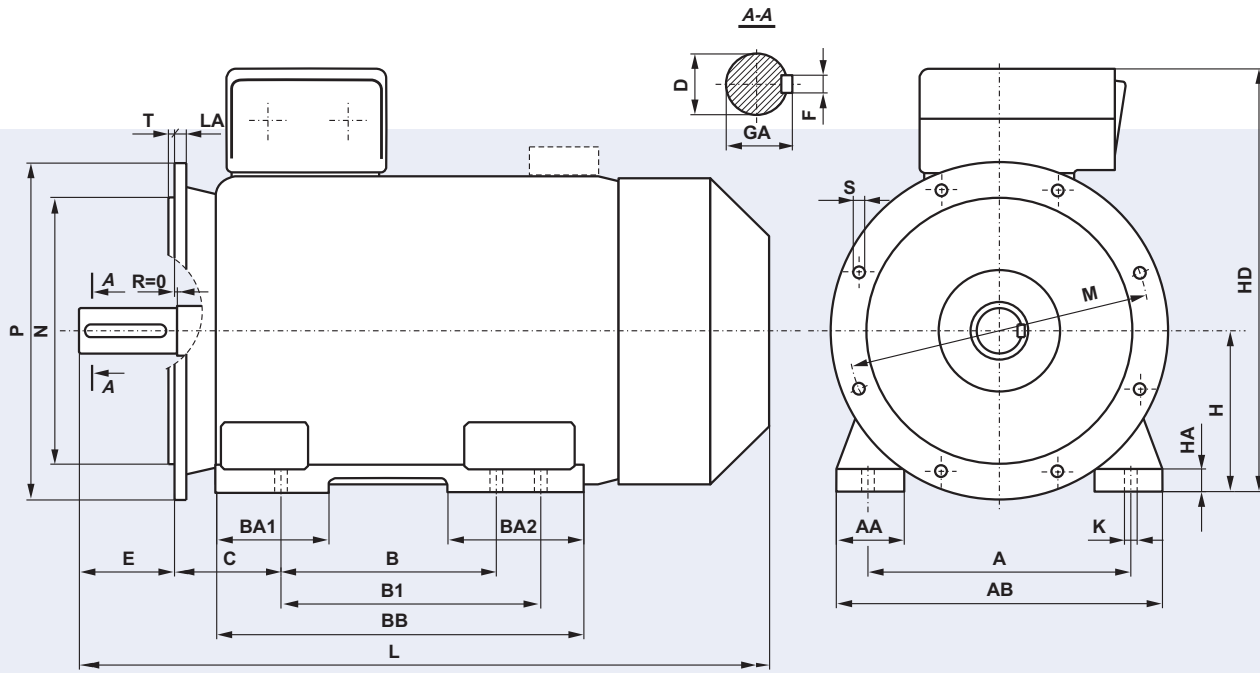


Typ silnika	A	B	C	D	E	F	GA	H	HA	K	AA	AB	AC	AD	BA	BB	HD	L	LA	M	N	P	T	S	φ	Otw.
SLg 200 L...	318	305	133	55m6	110	16h9	59	200	32	19	80	400	450	355	100	380	485	810	16,5	350	300	400	5	18	4	
SLg 225 S4..	356	286	149	60m6	140	18h9	64	225	34	19	85	445	505	375	110	355	535	860	18	400	350	450	5	18	8	
SLg 225 M2..	356	311	149	55m6	110	16h9	59	225	34	19	85	445	505	375	110	380	535	855	18	400	350	450	5	18	8	
SLg 225 M...	356	311	149	60m6	140	18h9	64	225	34	19	85	445	505	375	110	380	535	885	18	400	350	450	5	18	8	
SLg 250 M2..	406	349	168	60m6	140	18h9	64	250	36	24	90	495	540	415	120	420	590	980	19	500	450	550	5	18	8	
SLg 250 M...	406	349	168	65m6	140	18h9	69	250	36	24	90	495	540	415	120	420	590	980	19	500	450	550	5	18	8	
SLg 280 S2..	457	368	190	65m6	140	18h9	69	280	40	24	100	560	620	450	165	520	660	1040	20	500	450	550	5	18	8	
SLg 280 S...	457	368	190	75m6	140	20h9	79,5	280	40	24	100	560	620	450	165	520	660	1040	20	500	450	550	5	18	8	
SLg 280 M2..	457	419	190	65m6	140	18h9	69	280	40	24	100	560	620	450	165	520	660	1040	20	500	450	550	5	18	8	
SLg 280 M...	457	419	190	75m6	140	20h9	79,5	280	40	24	100	560	620	450	165	520	660	1040	20	500	450	550	5	18	8	
SLg 315 S2..	508	406	216	65m6	140	18h9	69	315	46	28	105	610	620	450	190	560	695	1180	22	600	550	660	6	22	8	
SLg 315 S...	508	406	216	80m6	170	22h9	85	315	46	28	105	610	620	450	190	560	695	1210	22	600	550	660	6	22	8	
SLg 315 M2..	508	457	216	65m6	140	18h9	69	315	46	28	105	610	620	450	190	560	695	1180	22	600	550	660	6	22	8	
SLg 315 M...	508	457	216	80m6	170	22h9	85	315	46	28	105	610	620	450	190	560	695	1210	22	600	550	660	6	22	8	
SLg 355 S2..	610	500	254	80m6	170	22h9	85,0	355	50	28	158	720	764	620	170	600	848	1354	24	740	680	800	6	24	8	
SLg 355 S...	610	500	254	100m6	210	28h9	106	355	50	28	158	720	764	620	170	600	848	1394	24	740	680	800	6	24	8	
SLg 355 M...	610	560	254	100m6	210	28h9	106	355	50	28	158	720	764	620	205	730	848	1454	24	740	680	800	6	24	8	

Silniki SLg200L - SLg 315 są również dostępne w formach wykonania: IM B65, IM B75 i IM B85

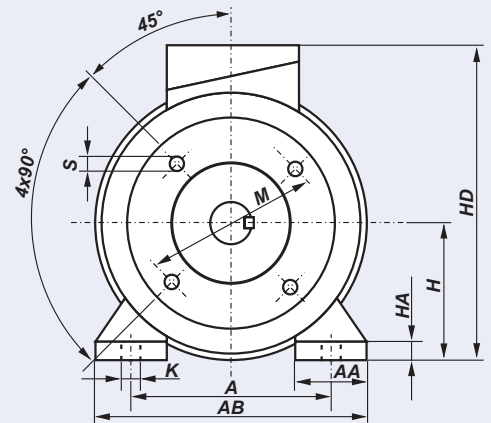
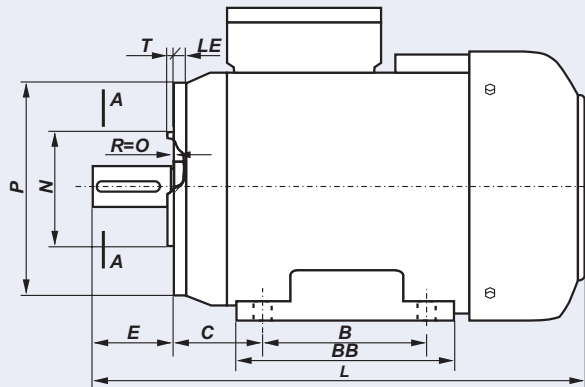
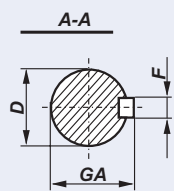
WYMIARY MONTAŻOWE I GABARYTOWE

SILNIKI KOŁNIERZOWE NA ŁAPACH - IM B35



Typ silnika	bieg.	A	B	B1	C	D	E	F	GA	H	HA	K	AA	AB	BA1	BA2	BB	HD	L	LA	M	N	P	S	T
SLEE 355	2	610	560	630	254	80	170	22	85	355	50	28	150	720	250	300	890	935	1580	24	740	680	800	22	6
SLEE 355	4+8	610	560	630	254	100	210	28	106	355	50	28	150	720	250	300	890	935	1620	24	740	680	800	22	6
SLh 355...s	2	610	900	---	254	70	140	20	75	355	45	28	160	730	265	265	1045	995	1854	24	740	680	800	22	6
SLh 355...s	4+8	610	900	---	254	100	210	28	106	355	45	28	160	730	265	265	1045	995	1924	24	740	680	800	22	6

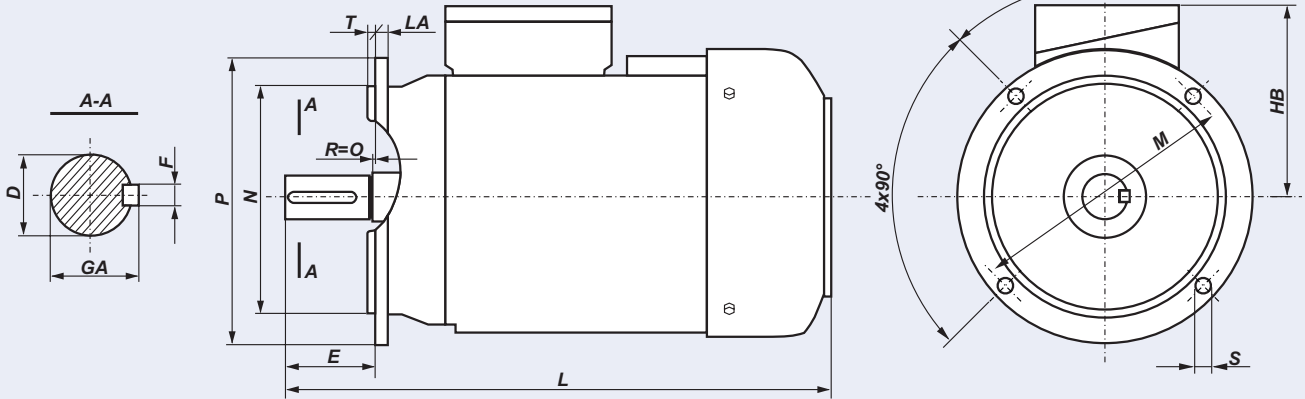
SILNIKI KOŁNIERZOWE NA ŁAPACH - IM B34



WYMIARY MONTAŻOWE I GABARYTOWE

Typ silnika	Kotłierz	A	AA	B	C	D	E	F	GA	H	HA	K	M	N	P	S	LE	T	HD	L
SLh 71- .A1	B14/C1	112	45	90	45	14j6	30	5h9	16,0	71	8	10,0	115	95j6	140	M8	14,0	3,0	182	223
SLh 71- .A2	B14/C2	112	45	90	45	14j6	30	5h9	16,0	71	8	10,0	85	70j6	105	M6	12,0	2,5	182	223
SLh 71- .B1	B14/C1	112	45	90	45	14j6	30	5h9	16,0	71	8	10,0	115	95j6	140	M8	14,0	3,0	182	245
SLh 71- .B2	B14/C2	112	45	90	45	14j6	30	5h9	16,0	71	8	10,0	85	70j6	105	M6	12,0	2,5	182	245
SLh 80- .A1	B14/C1	125	55	100	50	19j6	40	6h9	21,5	80	9	10,0	130	110j6	160	M8	14,0	3,5	195	266
SLh 80- .A2	B14/C2	125	55	100	50	19j6	40	6h9	21,5	80	9	10,0	100	80j6	120	M6	12,0	3,0	195	266
SLh 80- .B1	B14/C1	125	55	100	50	19j6	40	6h9	21,5	80	9	10,0	130	110j6	160	M8	14,0	3,5	195	278
SLh 80- .B2	B14/C2	125	55	100	50	19j6	40	6h9	21,5	80	9	10,0	100	80j6	120	M6	12,0	3,0	195	278
SLh 90S ...	B14/C1	140	50	100	56	24j6	50	8h9	27,0	90	10	10,0	130	110j6	160	M8	10,0	3,5	220	305
SLh 90S ...	B14/C2	140	50	100	56	24j6	50	8h9	27,0	90	10	10,0	115	95j6	140	M8	10,0	3,0	220	305
SLh 90L ...	B14/C1	140	50	125	56	24j6	50	8h9	27,0	90	10	10,0	130	110j6	160	M8	10,0	3,5	220	330
SLh 90L ...	B14/C2	140	50	125	56	24j6	50	8h9	27,0	90	10	10,0	115	95j6	140	M8	10,0	3,0	220	330
SLg 100L ...	B14/C1	160	45	140	63	28j6	60	8h9	31,0	100	14	12,0	165	130j6	200	M10	12,0	3,5	240	376
SLg 100L ...	B14/C2	160	45	140	63	28j6	60	8h9	31,0	100	14	12,0	130	110j6	160	M8	12,0	3,5	240	376
SLg 112M ...	B14/C1	190	54	140	70	28j6	60	8h9	31,0	112	14	12,0	165	130j6	200	M10	12,0	3,5	276	384
SLg 112M ...	B14/C2	190	54	140	70	28j6	60	8h9	31,0	112	14	12,0	130	110j6	160	M8	12,0	3,5	276	384
SLg 132S ...	B14/C1	216	56	140	89	38k6	80	10h9	41,0	132	16	12,0	215	180j6	250	M12	12,0	4,0	310	463
SLg 132S ...	B14/C2	216	56	140	89	38k6	80	10h9	41,0	132	16	12,0	165	130j6	200	M12	12,0	3,5	310	463
SLg 132S-2B	B14/C1	216	56	140	89	38k6	80	10h9	41,0	132	16	12,0	215	180j6	250	M12	12,0	4,0	310	501
SLg 132S-2B	B14/C2	216	56	140	89	38k6	80	10h9	41,0	132	16	12,0	165	130j6	200	M12	12,0	3,5	310	501
SLg 132M...	B14/C1	216	56	140	89	38k6	80	10h9	41,0	132	16	12,0	215	180j6	250	M12	12,0	4,0	310	501
SLg 132M...	B14/C2	216	56	140	89	38k6	80	10h9	41,0	132	16	12,0	165	130j6	200	M12	12,0	3,5	310	501

SILNIKI KOŁNIERZOWE - IM B5, IM V1, IM V3

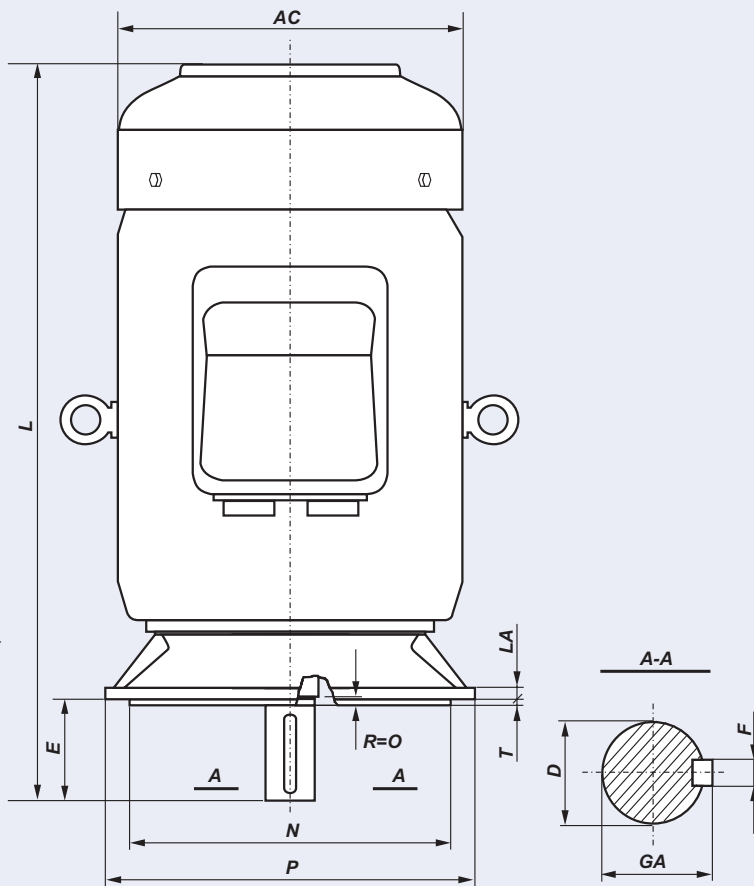
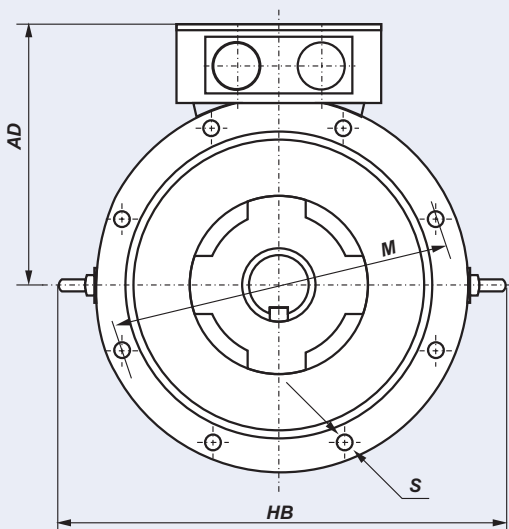


Typ silnika	D	E	F	GA	M	N	P	LA	T	S	HB	L
SKh 71- .A	14j6	30	5h9	16,0	130	110j6	160	9	3,5	10	111	223
SKh 71- .B	14j6	30	5h9	16,0	130	110j6	160	9	3,5	10	111	245
SKh 80- .A	19j6	40	6h9	21,5	165	130j6	200	10	3,5	12	115	266
SKh 80- .B	19j6	40	6h9	21,5	165	130j6	200	10	3,5	12	115	278
SKh 90S ...	24j6	50	8h9	27,0	165	130j6	200	8	3,5	12	130	305
SKh 90L ...	24j6	50	8h9	27,0	165	130j6	200	8	3,5	12	130	330
SKg 100L ...	28j6	60	8h9	31,0	215	180j6	250	11	4,0	15	140	376
SKg 112M ...	28j6	60	8h9	31,0	215	180j6	250	12	4,0	15	164	384
SKg 132S ...	38k6	80	10h9	41,0	265	230j6	300	12	4,0	15	178	463
SKg 132S-2B	38k6	80	10h9	41,0	265	230j6	300	12	4,0	15	178	501
SKg 132M ...	38k6	80	10h9	41,0	265	230j6	300	12	4,0	15	178	501
SKg 160M ...	42k6	110	12h9	45,0	300	250j6	350	13	5,0	19	210	612
SKg 160L ...	42k6	110	12h9	45,0	300	250j6	350	13	5,0	19	210	656
SKg 180M ...	48k6	110	14h9	51,5	300	250j6	350	13	5,0	19	228	705
SKg 180L ...	48k6	110	14h9	51,5	300	250j6	350	13	5,0	19	228	705

WYMIARY MONTAŻOWE I GABARYTOWE



SILNIKI KOŁNIERZOWE - IM B5, IM V1, IM V3

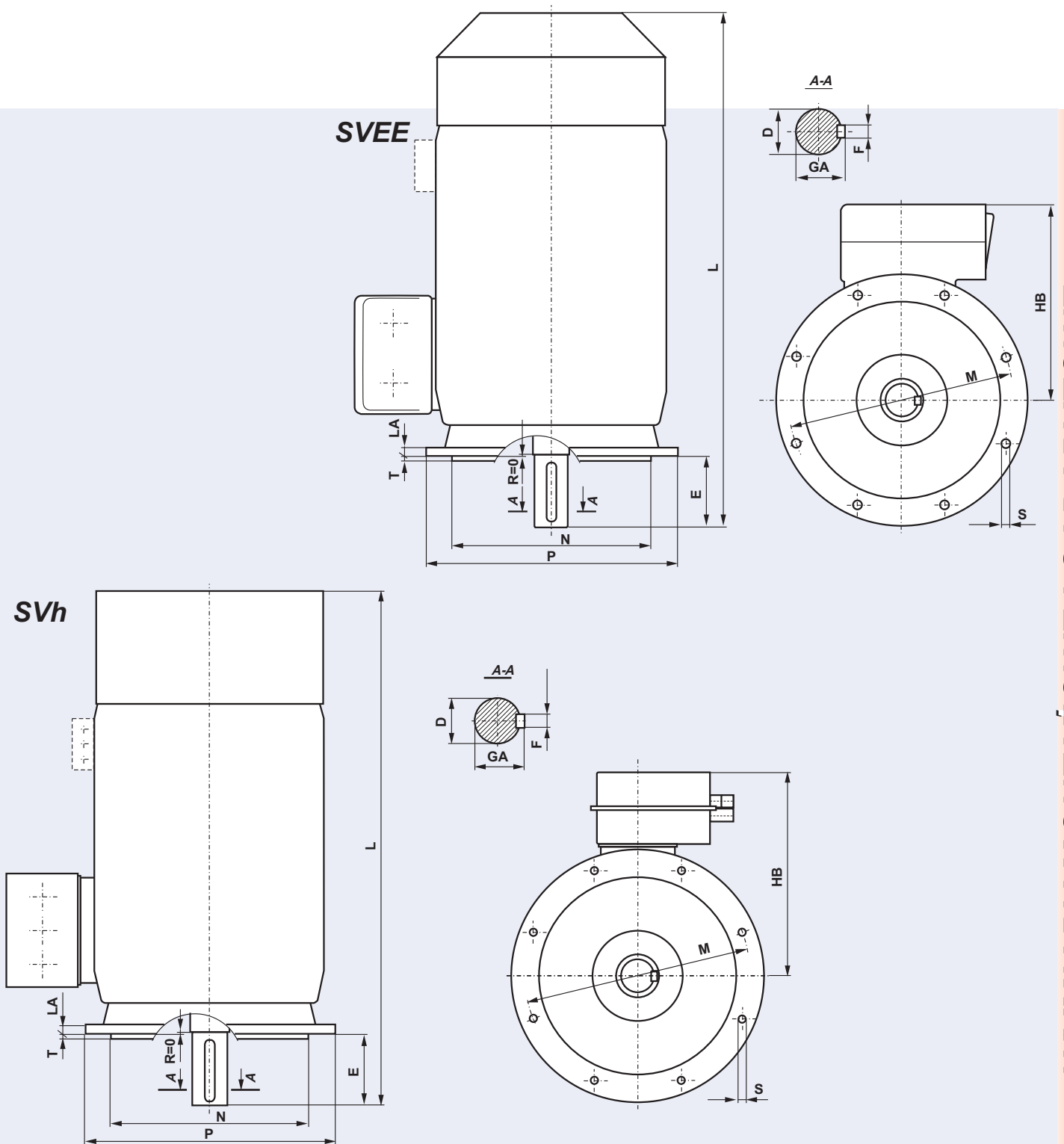


WYMIARY MONTAŻOWE I GABARYTOWE

Typ silnika	D	E	F	GA	AC	AD	HB	L	LA	M	N	P	T	S	
SKg 200 L...	55m6	110	16h9	59,0	450	355	570	810	16,5	350	300j6	400	5	18	4
SKg 225 S...	60m6	140	18h9	64,0	505	375	620	860	18,0	400	350j6	450	5	18	8
SKg 225 M2..	55m6	110	16h9	59,0	505	375	620	855	18,0	400	350j6	450	5	18	8
SKg 225 M...	60m6	140	18h9	64,0	505	375	620	885	18,0	400	350j6	450	5	18	8
SKg 250 M2..	60m6	140	18h9	64,0	540	415	675	980	19,0	500	450j6	550	5	18	8
SKg 250 M...	65m6	140	18h9	69,0	540	415	675	980	19,0	500	450j6	550	5	18	8
SKg 280 S2..	65m6	140	18h9	69,0	620	450	755	1040	20,0	500	450j6	550	5	18	8
SKg 280 S...	75m6	140	20h9	79,5	620	450	755	1040	20,0	500	450j6	550	5	18	8
SKg 280 M2..	65m6	140	18h9	69,0	620	450	755	1040	20,0	500	450j6	550	5	18	8
SKg 280 M...	75m6	140	20h9	79,5	620	450	755	1040	20,0	500	450j6	550	5	18	8
SKg 315 S2..	65m6	140	18h9	69,0	620	450	790	1180	22,0	600	550j6	660	6	22	8
SKg 315 S...	80m6	170	22h9	85,0	620	450	790	1210	22,0	600	550j6	660	6	22	8
SKg 315 M2	65m6	140	18h9	69,0	620	450	790	1180	22,0	600	550j6	660	6	22	8
SKg 315 M...	80m6	170	22h9	85,0	620	450	790	1210	22,0	600	550j6	660	6	22	8
SVg 315 MC..*	80m6	170	22h9	85,0	693	551	877	1355	22,0	600	550js6	660	6	22	8
SVg 355 S...*	100m6	210	28h9	106,0	767	588	970	1580	24,0	740	680js6	800	6	24	8
SVg 355 M...*	100m6	210	28h9	106,0	767	588	970	1580	24,0	740	680js6	800	6	24	8

\* - silniki SVg mogą pracować tylko w pozycji IM V1

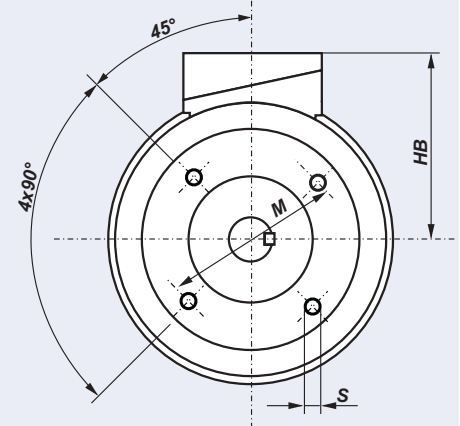
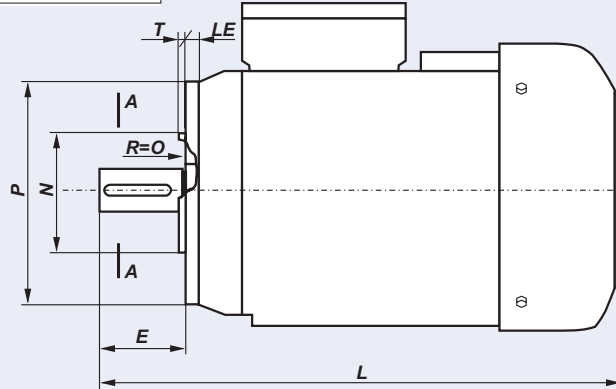
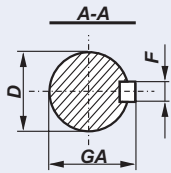
SILNIKI KOŁNIERZOWE - IM V1



WYMIARY MONTAŻOWE I GABARYTOWE

Typ silnika	Bieguny	D	E	F	GA	HB	L	LA	M	N	P	S	T
SVEE 355	4÷8	100	210	28	106	580	1620	24	740	680	800	22	6
SVh 355...s	4÷8	100	210	28	106	640	1924	24	740	680	800	22	6
SVh 400...s	4÷8	110	210	28	116	695	2016	30	940	880	1000	25	6
SVh 450...s	4÷8	110	210	28	116	745	2151	30	1080	1000	1150	28	6
SVh 500...s	4÷8	120	210	32	127	795	2505	30	1080	1000	1150	28	6

SILNIKI KOŁNIERZOWE - IM B14



WYMIARY MONTAŻOWE I GABARYTOWE

Typ silnika	Kołnierz	D	E	F	GA	M	N	P	S	T	LE	HB	L
SKh 71- .A1	B14/C1	14j6	30	5h9	16	115	95j6	140	M8	3	14	111	223
SKh 71- .A2	B14/C2	14j6	30	5h9	16	85	70j6	105	M6	2,5	12	111	223
SKh 71- .B1	B14/C1	14j6	30	5h9	16	115	95j6	140	M8	3	14	111	245
SKh 71- .B2	B14/C2	14j6	30	5h9	16	85	70j6	105	M6	2,5	12	111	245
SKh 80- .A1	B14/C1	19j6	40	6h9	21,5	130	110j6	160	M8	3,5	14	115	266
SKh 80- .A2	B14/C2	19j6	40	6h9	21,5	100	80j6	120	M6	3	12	115	266
SKh 80- .B1	B14/C1	19j6	40	6h9	21,5	130	110j6	160	M8	3,5	14	115	278
SKh 80- .B2	B14/C2	19j6	40	6h9	21,5	100	80j6	120	M6	3	12	115	278
SKh 90S ...	B14/C1	24j6	50	8h9	27,0	130	110j6	160	M8	3,5	10	130	305
SKh 90S ...	B14/C2	24j6	50	8h9	27,0	115	95j6	140	M8	3	10	130	305
SKh 90L ...	B14/C1	24j6	50	8h9	27,0	130	110j6	160	M8	3,5	10	130	330
SKh 90L ...	B14/C2	24j6	50	8h9	27,0	115	95j6	140	M8	3	10	130	330
SKg 100L ...	B14/C1	28j6	60	8h9	31,0	165	130j6	200	M10	3,5	12	140	376
SKg 100L ...	B14/C2	28j6	60	8h9	31,0	130	110j6	160	M8	3,5	12	140	376
SKg 112M ...	B14/C1	28j6	60	8h9	31,0	165	130j6	200	M10	3,5	12	164	384
SKg 112M ...	B14/C2	28j6	60	8h9	31,0	130	110j6	160	M8	3,5	12	164	384
SKg 132S ...	B14/C1	38k6	80	10h9	41,0	215	180j6	250	M12	4,0	12	178	463
SKg 132S ...	B14/C2	38k6	80	10h9	41,0	165	130j6	200	M12	3,5	12	178	463
SKg 132S-2B	B14/C1	38k6	80	10h9	41,0	215	180j6	250	M12	4,0	12	178	501
SKg 132S-2B	B14/C2	38k6	80	10h9	41,0	165	130j6	200	M12	3,5	12	178	501
SKg 132M ...	B14/C1	38k6	80	10h9	41,0	215	180j6	250	M12	4,0	12	178	501
SKg 132M ...	B14/C2	38k6	80	10h9	41,0	165	130j6	200	M12	3,5	12	178	501